

# No.7 Whitehall Road

Up to 5,467 sqm (58,850 sq ft)

Up to 34 car parking spaces



# No.7 Whitehall Road

No.7 Whitehall Road provides office accommodation on seven floors totalling 5,467 sqm (58,850 sqft) net floorspace with approx. 798 sqm (8600 sqft) net accommodation on a typical floorplate. A 16.5m clear span structural grid is employed, providing flexible office space for either open plan or cellular use.

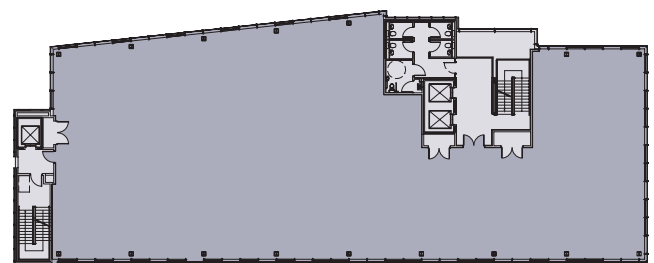
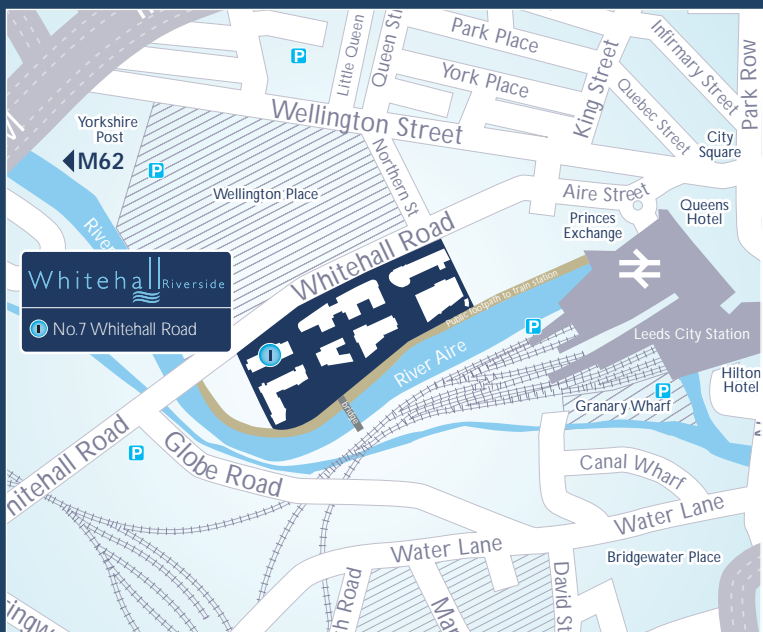
## Specification

- Very Good BREEAM design
- VRF 3 pipe comfort cooling
- 16.5m clear span office floorplate
- 2.8m floor to ceiling height
- 150mm clear floor void
- 2 No 13 person lifts
- Dedicated goods lift
- 34 car parking spaces
- 30 cycle spaces



Accommodation Schedule	sq m	sq ft
GROUND	679	7,310
1	798	8,590
2	798	8,590
3	798	8,590
4	798	8,590
5	798	8,590
6	798	8,590
<b>BUILDING TOTAL</b>	<b>5,467</b>	<b>58,850</b>

Approximate measurement from architects plans



Typical Floorplate



Town Centre Securities PLC  
Developing a Secure Future  
0113 222 1234



Hill Woolhouse, Sanderson Weatherall and Ashmore & Associates for themselves and for the vendors or lessor of this property for whom they act, give notice that: i) these particulars are a general outline only for the guidance of prospective purchasers or tenants and do not constitute the whole or any part of an offer or contract; ii) Hill Woolhouse, Sanderson Weatherall and Ashmore & Associates cannot guarantee the accuracy of any description, dimensions, references to condition, necessary permissions for use and occupation and other details contained herein and prospective purchasers or tenants must not rely on them as statements of fact or representations and must satisfy themselves as to their accuracy; iii) rents quoted in these particulars may be subject to VAT in addition; iv) Hill Woolhouse, Sanderson Weatherall and Ashmore & Associates will not be liable, in negligence or otherwise, for any loss arising from the use of these particulars; and v) the reference to any plant, machinery, equipment, services, fixture or fittings at the property shall not constitute a representation (unless otherwise stated) as to its state or condition or that it is capable of fulfilling its intended function. Prospective purchasers/tenants should satisfy themselves as to the fitness of such items for their requirements. vi) no employee of Hill Woolhouse, Sanderson Weatherall and Ashmore & Associates has any authority to make or give any representation or warranty or enter into any contract whatever in relation to the property.